

MM=125

# Allusion

Trombone Part

Jeff Brent  
(c) 2009

**Intro**    Bbmaj7/C                    Gm7                                    Bbmaj7/C                    Gm9

The first measure of the Intro section in bass clef, common time. It begins with a dotted quarter note on B1, followed by a quarter rest, then a quarter note on G2, a quarter note on F2, and a quarter note on E2. A slur covers the G2, F2, and E2 notes. The measure ends with a quarter rest.

Bm7b5                    Bm7b5/A                                    E7#9                    E7#5

The second measure of the Intro section in bass clef, common time. It begins with a quarter rest, followed by a quarter note on G2, a quarter note on F2, and a quarter note on E2. A slur covers the G2, F2, and E2 notes. The measure ends with a quarter rest.

**Verse**                    Am7

The first measure of the Verse section in bass clef, common time. It begins with a quarter rest, followed by a quarter note on G2, a quarter note on F2, and a quarter note on E2. A slur covers the G2, F2, and E2 notes. The measure ends with a quarter rest.

The second measure of the Verse section in bass clef, common time. It begins with a quarter rest, followed by a quarter note on G2, a quarter note on F2, and a quarter note on E2. A slur covers the G2, F2, and E2 notes. The measure ends with a quarter rest.

Dm9    Dm7/C

The third measure of the Verse section in bass clef, common time. It begins with a quarter rest, followed by a quarter note on G2, a quarter note on F2, and a quarter note on E2. A slur covers the G2, F2, and E2 notes. The measure ends with a quarter rest.

Bm7b5                    Bm7b5/A                                    E7#9                    E7#5

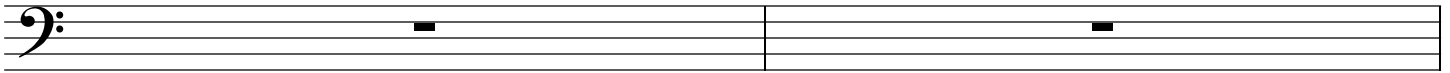
The fourth measure of the Verse section in bass clef, common time. It begins with a quarter rest, followed by a quarter note on G2, a quarter note on F2, and a quarter note on E2. A slur covers the G2, F2, and E2 notes. The measure ends with a quarter rest.

**Bridge**

Fmaj7/G                    Dm7                                    Fmaj7/G                    Dm9

The first measure of the Bridge section in bass clef, common time. It begins with a quarter note on G2, followed by a quarter rest, then a quarter note on F2, a quarter note on E2, and a quarter note on D2. A slur covers the F2, E2, and D2 notes. The measure ends with a quarter rest.

Amaj7

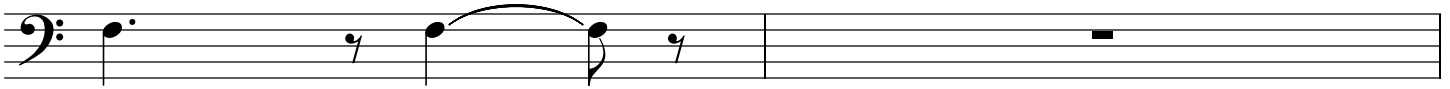


Bbmaj7/C

Gm7

Bbmaj7/C

Gm9



Bm7b5

Bm7b5/A

E7#9

E7#5

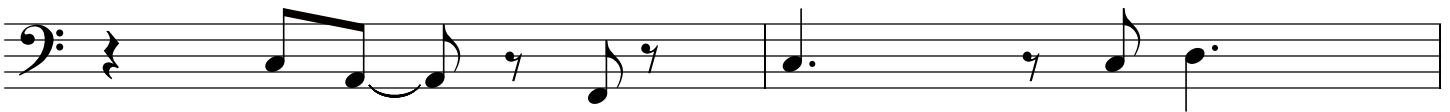


Verse Am7



Dm9

Dm7/C

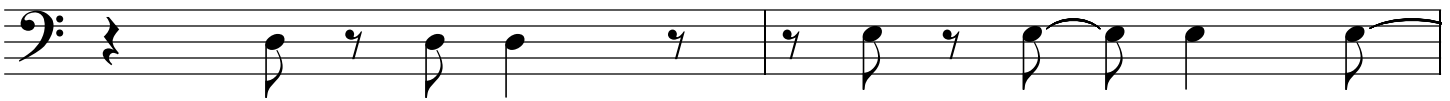


Bm7b5

Bm7b5/A

Coda

E7#9



E7#5

Am6

